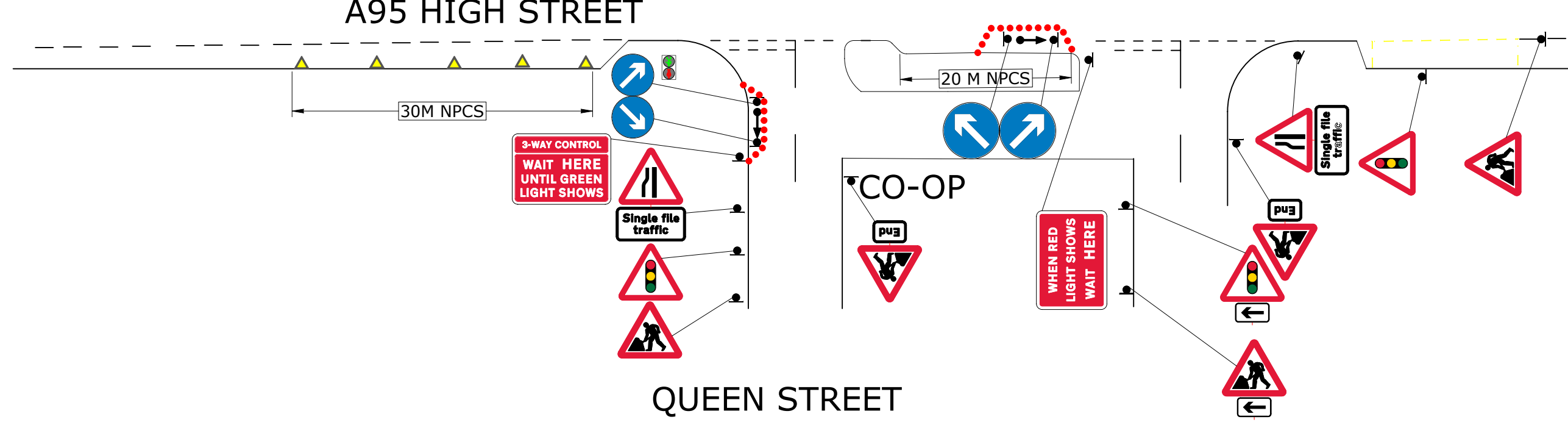
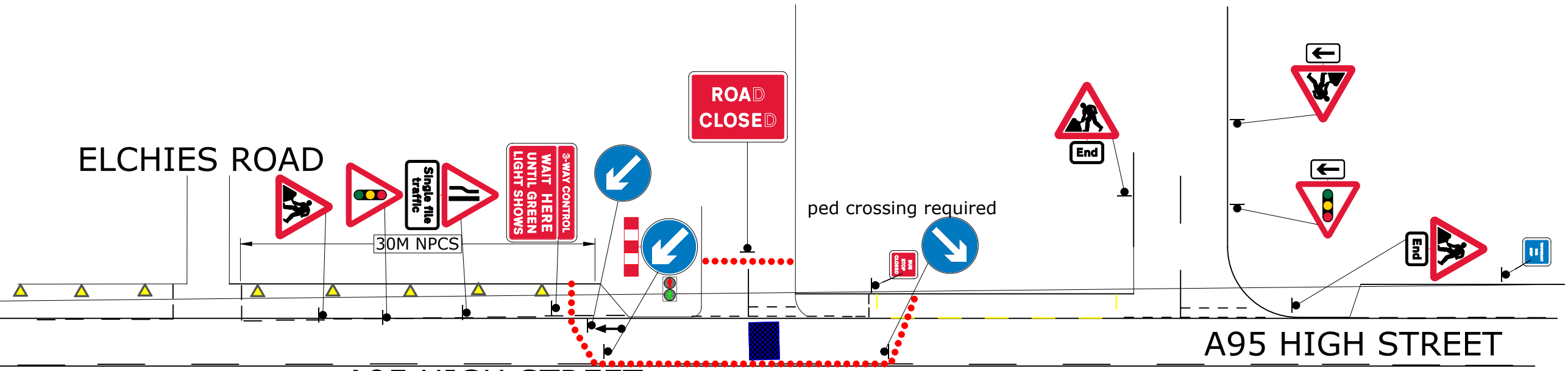


VICTORIA TERRACE VICTORIA TERRACE

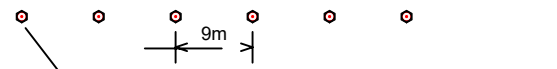


QUEEN STREET VICTORIA TERRACE



SWEEP PATH ANALYSIS	
Class	xxxxxxxxxxxxxxxx
Detail	xxxxxxxxxxxxxxxx
Success	<input checked="" type="checkbox"/> <input type="checkbox"/>
Fail	<input type="checkbox"/>

DETAIL C1 (C1)



Single/Dual carriageway 40mph or less - 750mm traffic cones.
 Single/Dual carriageway 50mph or more - 750mm traffic cones.
 Notes:
 1) During darkness, warning lights to BS EN 12352:2006 should be provided in accordance with Table A1.3 (Appendix 1).
 2) For relaxation to Detail C1 see Table A1.3 (Appendix 1).

DETAIL B (B)



Single/Dual carriageway 40mph or less - 450mm traffic cones, spacing 1.5m.
 Single/Dual carriageway 50mph or more - 750mm traffic cones, spacing 1.5m.
 Dual carriageway national speed limit - 750mm traffic cones, spacing 1.5m, relaxation 3m.
 Notes:
 1) During darkness, warning lights to BS EN 12352:2006 should be provided in accordance with Table A1.3 (Appendix 1).
 2) 45° tapers have 1.2 m spacing, no relaxations.
 3) On motorways and NSL AP duals with hard shoulders, 1m cones will be required for both standard and relaxation works for lead tapers and the facing wall of lane changes.

The information in this drawing may not be copied or used by third parties without written consent from Sunbelt Rentals Ltd (Traffic Management). this layout is for installation by NRSWA, Lantra 12A,12B,12C,12D qualified persons.

THIS DOCUMENT IS UNCONTROLLED WHEN PRINTED
 The electronic version of this document is the approved and most current. Any printed version is uncontrolled and may not be current.

