

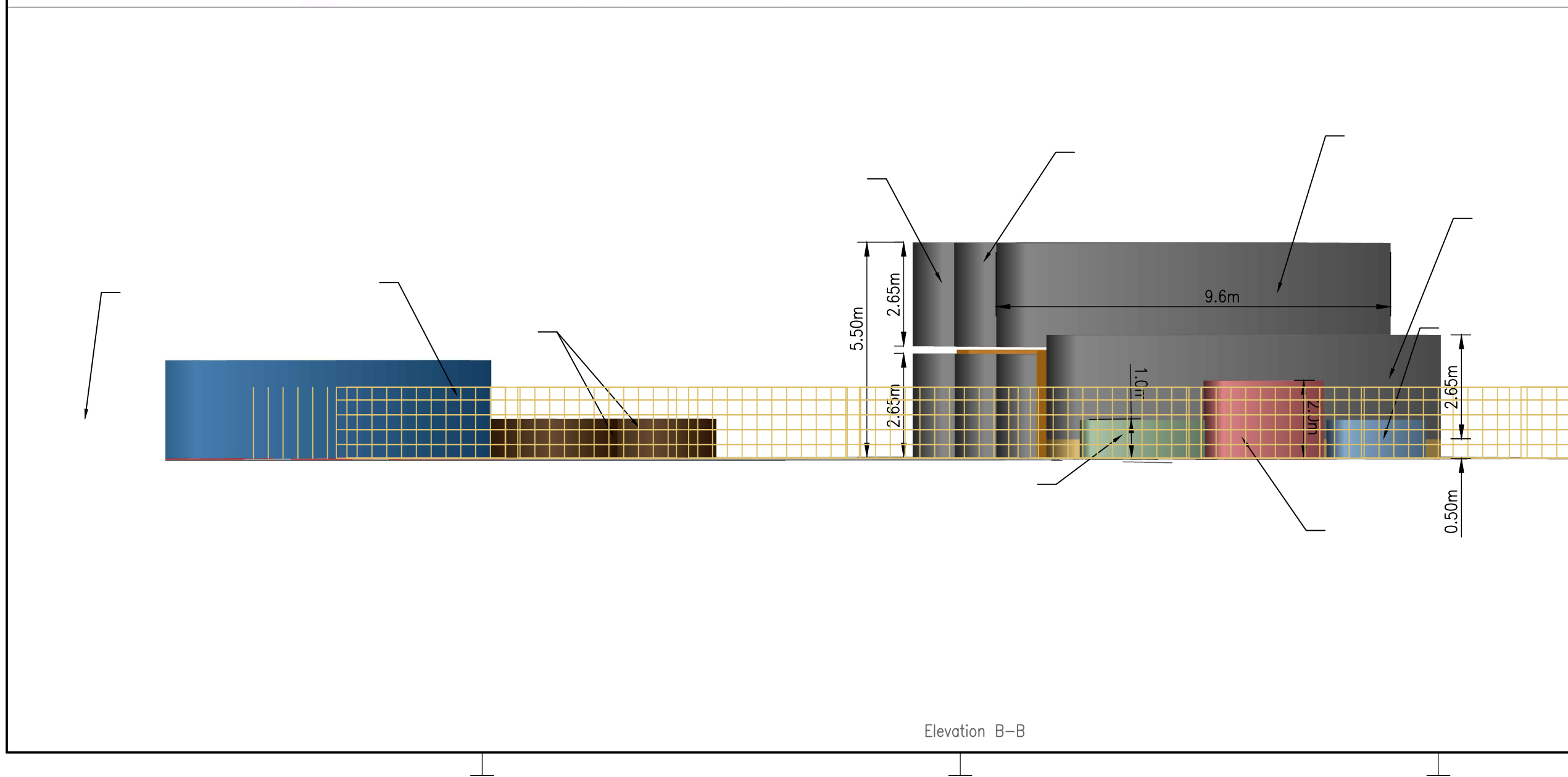
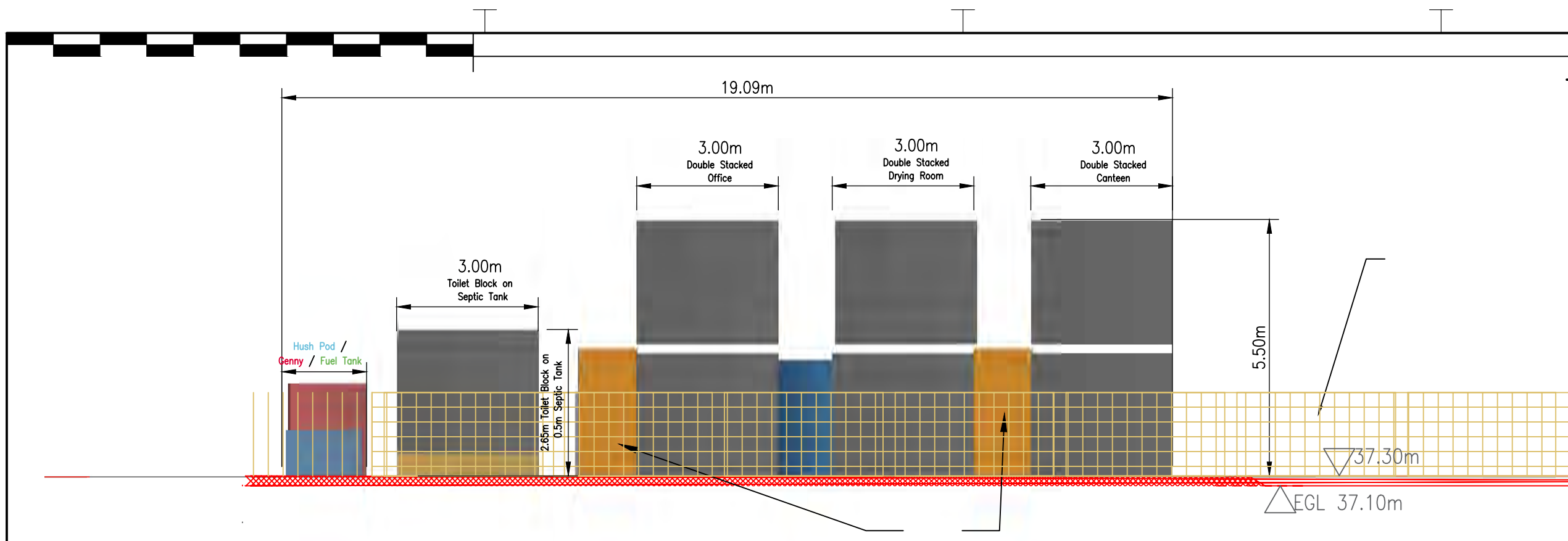
SCOTTISH WATER HEALTH AND SAFETY INFORMATION	
IN ADDITION TO THE RISKS NORMALLY ASSOCIATED WITH THE TYPES OF WORK DETAILLED ON THIS DRAWING, PLEASE NOTE THE FOLLOWING: (SEE FULL DESIGN RISK ASSESSMENT FOR DETAILS)	
CONSTRUCTION PHASE	
RESIDUAL RISK THAT COULD NOT BE AVOIDED BY A COMPETENT CONTRACTOR:	ACTION REQUIRED TO CONTROL RESIDUAL RISK:
- Not applicable.	- Not applicable.
SIGNIFICANT OPERATIONS - WORK ON LIVE, VERTICAL, PEDESTAL, VEHICLE/PLANT	
POINTS REQUIRING ACCESS:	METHOD OF ACCESS:
- Not applicable.	- Not applicable.
SIGNIFICANT OPERATIONS - DUNING / LIFTING STRATEGY	
ITEMS REQUIRING HULLING:	METHOD OF HULLING:
- Not applicable.	- Not applicable.
IT IS ASSUMED THAT ALL WORKS WILL BE CARRIED OUT BY A COMPETENT PERSON WORKING WHERE APPROPRIATE, TO AN APPROVED SAFE SYSTEM OF WORK.	

**Scottish Water**  
Trusted to serve Scotland

**GEORGE LESLIE LTD**  
CIVIL ENGINEERING CONTRACTORS

Denotes existing tree to be removed

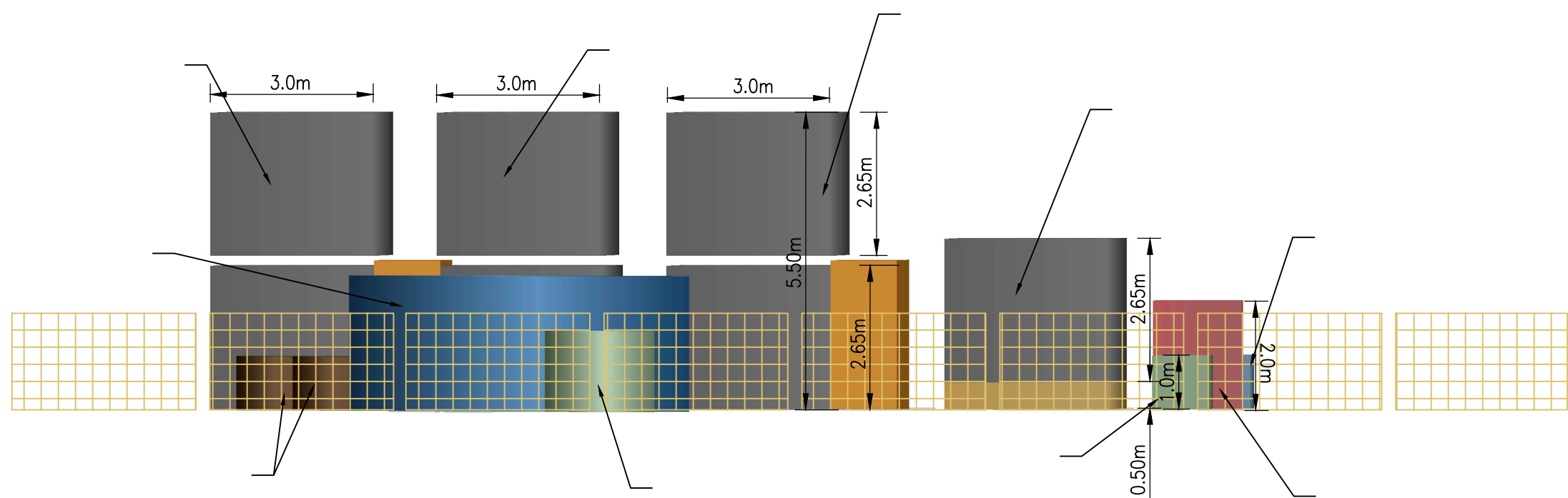
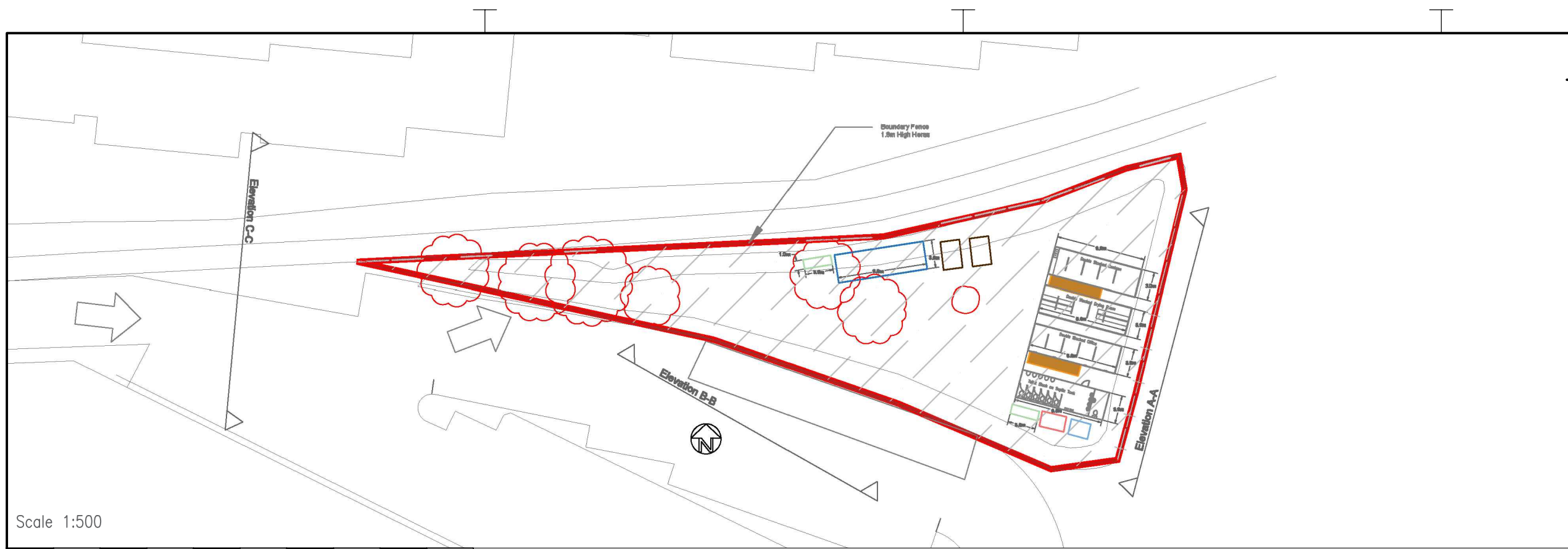




SCOTTISH WATER HEALTH AND SAFETY INFORMATION	
IN ADDITION TO THE HAZARDS NORMALLY ASSOCIATED WITH THE TYPES OF WORK DETAILED ON THIS DRAWING, PLEASE NOTE THE FOLLOWING: (SEE FULL DESIGN RISK ASSESSMENT FOR DETAILS)	
CONSTRUCTION PHASE	
RESIDUAL RISK THAT COULD NOT BE OBVIOUS TO "COMPETENT CONTRACTOR":	ACTION REQUIRED TO CONTROL RESIDUAL RISK:
- Not applicable.	- Not applicable.
SW OPERATIONS - ACCESS - HORIZONTAL, VERTICAL, PEDESTRIAN, VEHICLE/PLANT	
POINTS REQUIRING ACCESS:	METHOD OF ACCESS:
- Not applicable.	- Not applicable.
SW OPERATIONS - HOISTING / LIFTING STRATEGY	
ITEMS REQUIRING HOISTING:	METHOD OF HOISTING:
- Not applicable.	- Not applicable.
IT IS ASSUMED THAT ALL WORKS WILL BE CARRIED OUT BY A COMPETENT PERSON WORKING, WHERE APPROPRIATE, TO AN APPROVED SAFE SYSTEM OF WORK.	

**Scottish Water**  
Trusted to serve Scotland

**GEORGE LESLIE LTD**  
CIVIL ENGINEERING CONTRACTORS



<b>SCOTTISH WATER HEALTH AND SAFETY INFORMATION</b>	
IN ADDITION TO THE HAZARDS NORMALLY ASSOCIATED WITH THE TYPES OF WORK DETAILED ON THIS DRAWING, PLEASE NOTE THE FOLLOWING: (SEE FULL DESIGN RISK ASSESSMENT FOR DETAILS)	
<b>CONSTRUCTION PHASE</b>	
RESIDUAL RISK THAT COULD NOT BE OBVIOUS TO "COMPETENT CONTRACTOR": - Not applicable.	ACTION REQUIRED TO CONTROL RESIDUAL RISK: - Not applicable.
<b>SW OPERATIONS - ACCESS - HORIZONTAL, VERTICAL, PEDESTRIAN, VEHICLE/PLANT</b>	
POINTS REQUIRING ACCESS: - Not applicable.	METHOD OF ACCESS: - Not applicable.
<b>SW OPERATIONS - HOISTING / LIFTING STRATEGY</b>	
ITEMS REQUIRING HOISTING: - Not applicable.	METHOD OF HOISTING: - Not applicable.
IT IS ASSUMED THAT ALL WORKS WILL BE CARRIED OUT BY A COMPETENT PERSON WORKING, WHERE APPROPRIATE, TO AN APPROVED SAFE SYSTEM OF WORK.	

**Scottish Water**  
Trusted to serve Scotland

**GEORGE LESLIE LTD**  
CIVIL ENGINEERING CONTRACTORS