



# Glenfarg Water Treatment Works (WTW) Project Update

Thank you to all those Glenfarg residents who came out to our information event in November, we were delighted with the great turn out. The following were the most popular queries so we have tried to answer them as fully as we can at this time.

## 1. Concern about additional traffic on the roads in Glenfarg but specifically Church Brae.

- a. Loss of parking ability / access issues
- b. Winter conditions
- c. Meeting traffic coming the other way
- d. Junction of Church Brae and Ladeside
- e. Other road users (horses / children / bikes / walkers / school bus)
- f. Condition of verges
- g. Noise / vibration – devaluation of property

- Safety around vehicle movements will be the priority for the Project Team.
- Logistics Manager to plan our vehicle movements around winter conditions, school runs, bin collection, etc.
- Plans for large vehicles to be escorted
- Dialogue to continue between Scottish Water and closest residents of the project
- Project Team to have discussions with Perth & Kinross roads officer.

## 2. Concern for the Village shop and our impact in his business

- a. Will Scottish Water prevent parking from taking place outside the shop
- b. Will this effect the bus which stops here

- There has not been any intention to restrict parking outside the shop or to close Ladeside. Project Team to have discussions with Perth & Kinross roads and the shopkeeper to directly to discuss impact and opportunities.

## 3. Community Compensation

- a. What further value can be added to Glenfarg community?
- b. Can you support the local community hall?

- SW are open to providing some form of community enhancement alongside this project. Further discussion will be held with the community council to identify the best way to do this.

## 4. How will you stay in touch with the Community?

- a. Glenfarg Grapevine
- b. Community Noticeboard

- Aim to have a community noticeboard updated regularly with vehicle movement schedules and general project updates. (best location to be confirmed with community council)
- We are aiming to also provide updates digitally via a Whatsapp groupchat which all members of the community will be offered the chance to join.

 [scottishwater.co.uk](http://scottishwater.co.uk)

 [/scottishwater](https://www.facebook.com/scottishwater)

 [@scottish\\_water](https://twitter.com/scottish_water)

## 5. The local wildlife and Environment

- a. Vegetation
- b. Red squirrels
- c. Beavers
- d. Barn owls
- e. Wild orchids

- The project team and the Scottish Water Specialist Advisors will ensure that the correct level of care and safeguarding is afforded to the local wildlife. Scottish Water will ensure that all statutory & legal requirements are met.

## 6. Water Quality

- a. Taste & odour
- b. Security of supply

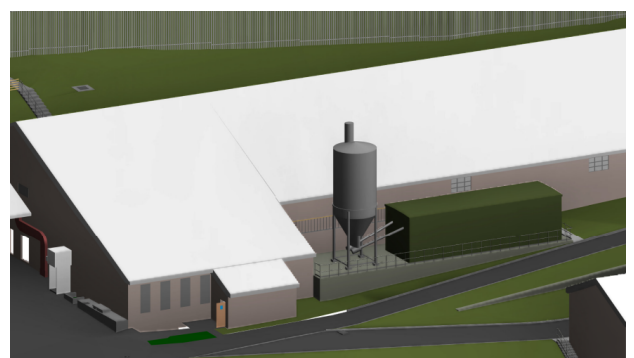
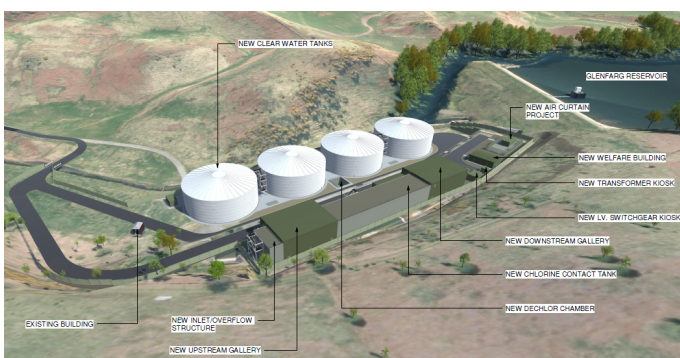
- The project will deliver greatly increased security of supply by significantly increasing the volume of stored, treated water. This should also deliver an improvement in taste and odour. Scottish Water will monitor the taste and odour improvement post project completion.

### NEXT STEPS

The above is Scottish Water initial considerations following early planning and feedback gathered at the November information event, however more considerations will be made as planning progresses. We will ensure to keep the community updated on our progress with a further update in the new year.

### CONTACTING SCOTTISH WATER AND ESD

Should you have any queries about the project or require any further information you can contact ESD by emailing [community@esd.scot](mailto:community@esd.scot) For any urgent queries please use the Scottish Water Helpline 08000 778 778 or e-mail [help@scottishwater.co.uk](mailto:help@scottishwater.co.uk) as assistance is available here 24/7 throughout the year.



 [scottishwater.co.uk](http://scottishwater.co.uk)

 [/scottishwater](https://www.facebook.com/scottishwater)

 [@scottish\\_water](https://twitter.com/scottish_water)