



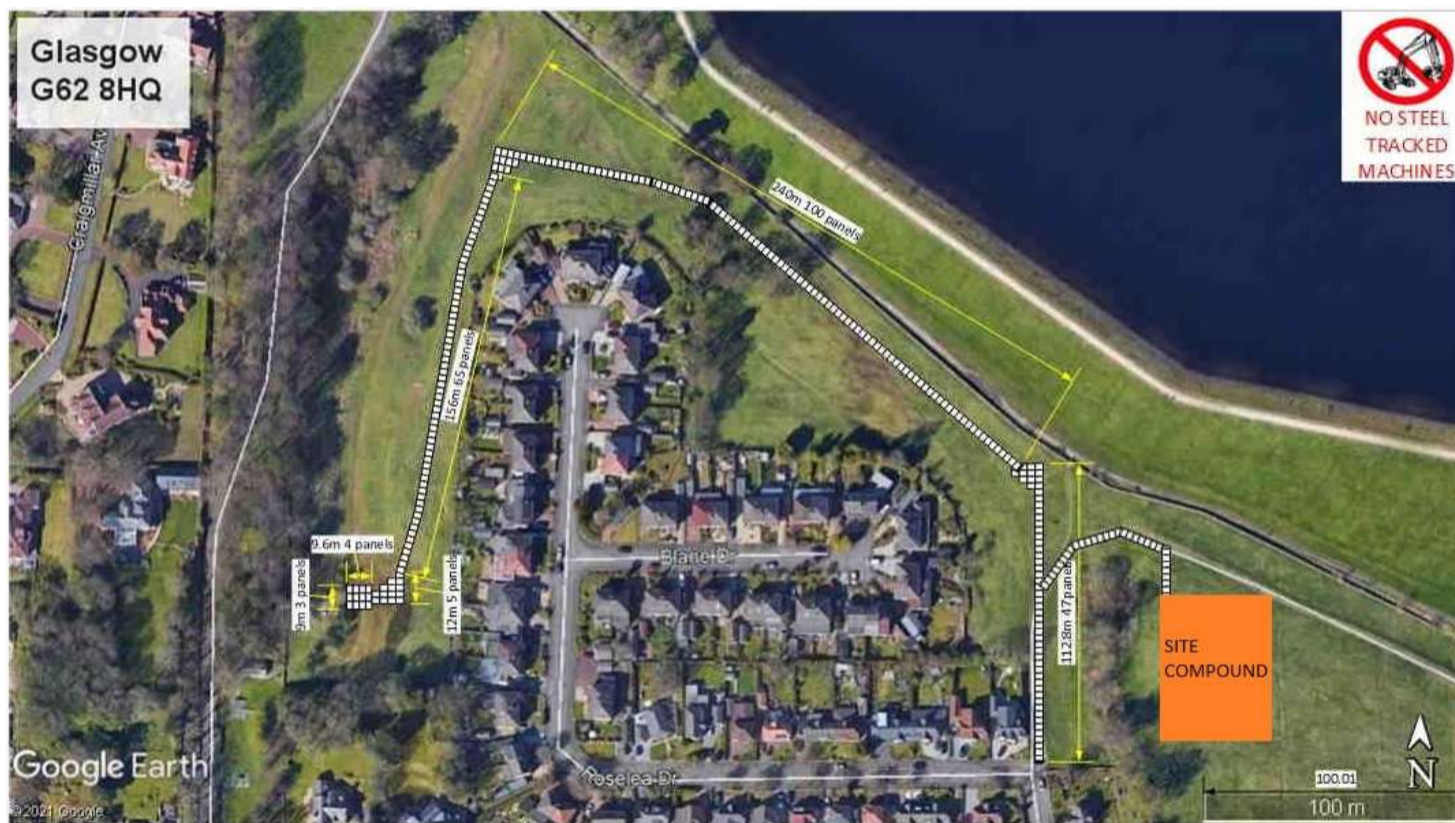
Scottish Water

Trusted to serve Scotland

Taking care of your water supply

Site Compound and Trackway Access Routes

The Access track from Roselea Drive to be temporarily upgraded with ground mats to run to the PRV works site at Commissioners Road, the Craigmaddie Valve Tower and the Site Compound.



Ref: Capital/507951/George Leslie

 scottishwater.co.uk

 customer.services@scottishwater.co.uk

 0800 0778778

 facebook.com/scottishwater

 [@scottish_water](https://twitter.com/scottish_water)