



**Scottish
Water**

Trusted to serve Scotland

Welcome

Thank you for attending today's event about our Pittenweem Investment Projects.

With our alliance delivery partner, Caledonia Water Alliance (CWA), Scottish Water are carrying out improvements to the Wastewater Network at East Shore, West Shore and Seaview Row, Pittenweem to help prevent sewer flooding and help protect the environment.

The objectives of today's event are:

- To provide information on our investment and plans.
- To discuss how we can manage the impact of construction work.
- To answer questions and discuss any concerns

We have information on:

- Where this work will take place
- Why the project is required
- What this will involve
- The approximate duration of the work
- How to contact us should you have a query

If you have any questions/queries as our project progresses, please call our Customer Helpline on 0800 0778778 quoting Capital/Pittenweem/CWA

 scottishwater.co.uk

 [/scottishwater](https://www.facebook.com/scottishwater)

 [@scottish_water](https://twitter.com/scottish_water)



**Scottish
Water**

Trusted to serve Scotland

Project Overview

We will be working across 3 separate areas.

1. East Shore
2. West Shore
3. Seaview Row

Works involve:

1. **East Shore** – Upgrade to the existing CSO (Combined Sewer Overflow) and new outfall at East Shore.
2. **West Shore** – Upgrade to existing CSO and replacement of outfall at West Shore.
3. **Seaview Row Flooding** – Works are currently being developed regards this section with the aim to remove surface water flows from the sewer network from the area around Sandycraig Road, Toft Crescent & Queen Elizabeth Road.

Works are planned to start with **East Shore** in **September 2023**.

The works will then progress on a rolling basis and will be coordinated so that there will be no main works in the East Shore & West Shore harbour/beach areas during the busier summer months June, July and August.

It is anticipated that these works will be completed over a period of approximately 2 years with West Shore works starting around **September 2024**.

 scottishwater.co.uk

 [/scottishwater](https://www.facebook.com/scottishwater)

 [@scottish_water](https://twitter.com/scottish_water)



**Scottish
Water**

Trusted to serve Scotland

General Information

- **East Shore will be the first section of work to take place. Further information regards West Shore and Seaview Row will be provided ahead of each of those sections.**
- The excavation works may involve some piling activity which can be particularly noisy/disruptive. We will try to keep these activities to a minimum.
- **During the works there will be restrictions to parking in and around the harbour area to maintain safe working areas.**
- There will also be localised traffic management in place to facilitate local access past our working areas.
- **Working areas will be securely fenced off.**
- Due to the compact nature of the area of East Shore, Site compound/Welfare Unit will be located in Mid Shore.
- **Pedestrian access will be maintained at all times.**
- If you require assistance during the works, please don't hesitate to ask our team on site.
- **Site working hours will typically be between 08.00-19.00hrs Monday to Friday. However due to the Tidal nature of the outfall construction works, there will be some working if required out with these times.**

 scottishwater.co.uk

 [/scottishwater](https://www.facebook.com/scottishwater)

 [@scottish_water](https://twitter.com/scottish_water)

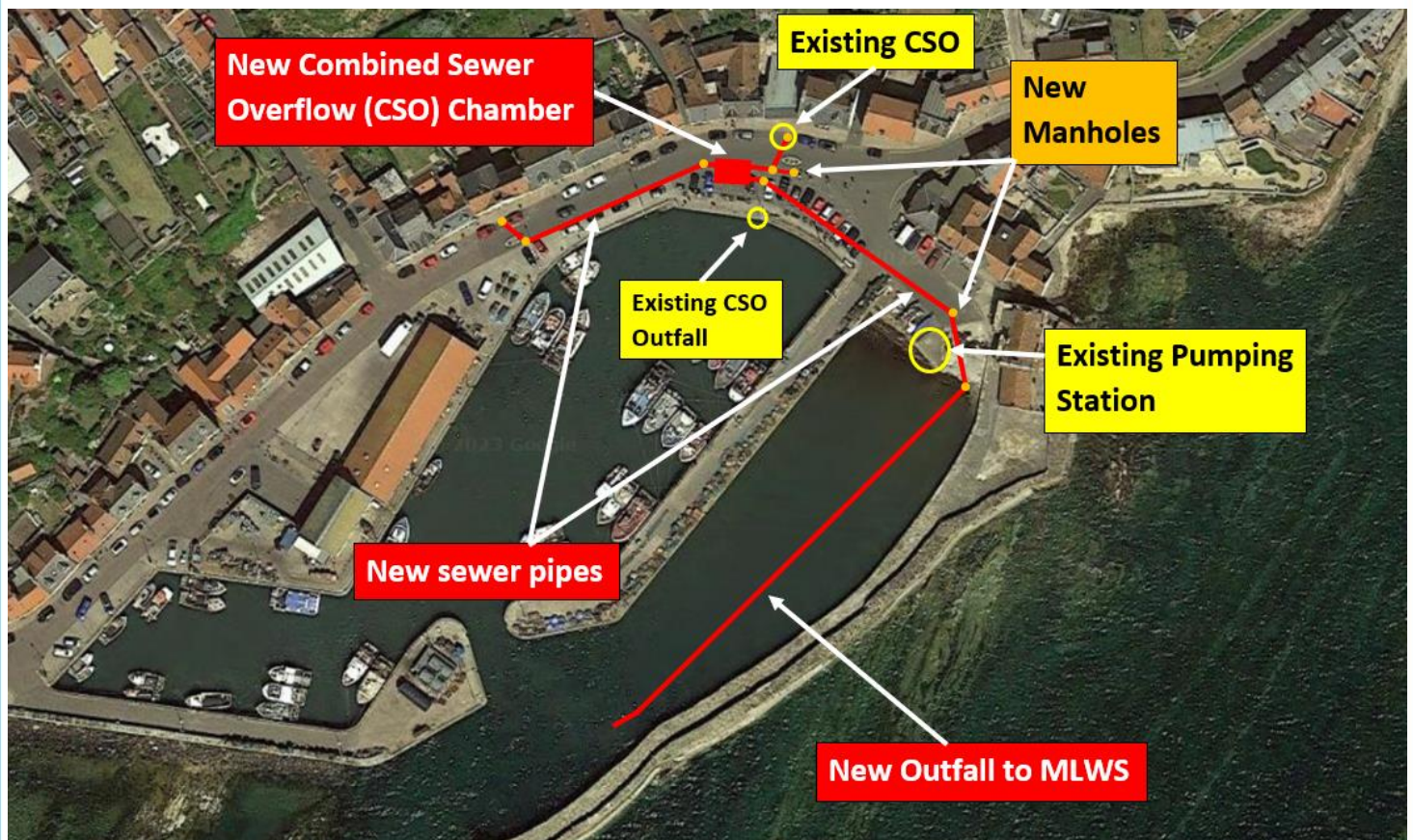


**Scottish
Water**

Trusted to serve Scotland

East Shore – Work Overview

- Works planned to start **September 2023** for approximately **6 months**.
- The new Combined Sewer Overflow (CSO) chamber will be an upgrade on the existing CSO and fitted with a mechanical screen.
- The new outfall pipe within the East Harbour will take any discharges from the CSO out to Mean Low Water Springs (MLWS).



(Image shows approximate locations of works)

- There will be construction works within the East Shore area along with significant parking restrictions and traffic management throughout this section of works to allow for safe working areas, site compound and maintaining access to Mid/West Shore.
- Works will be phased to try keep areas of disruption to a minimum.

 scottishwater.co.uk

 [/scottishwater](https://www.facebook.com/scottishwater)

 [@scottish_water](https://twitter.com/scottish_water)

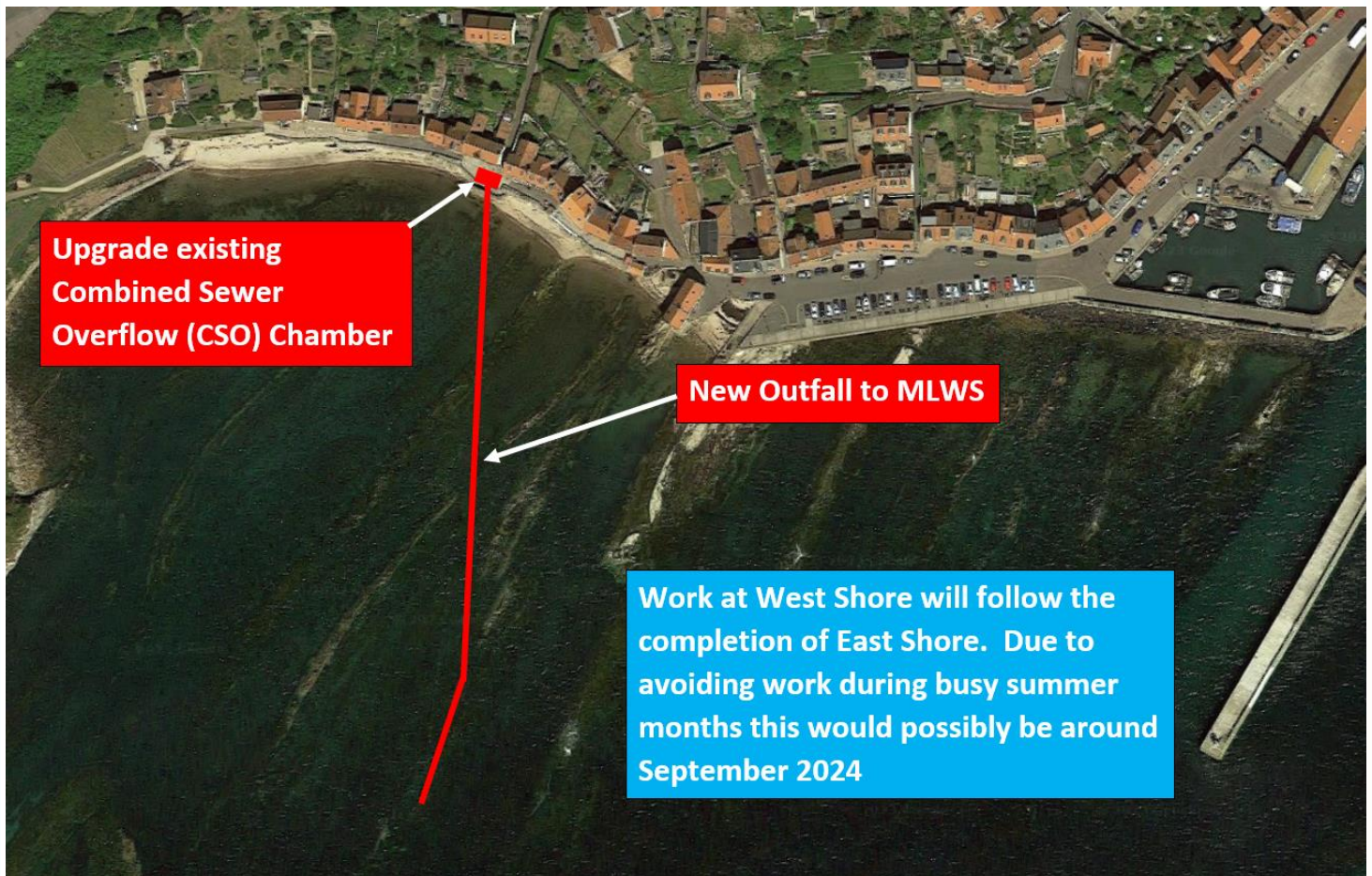


**Scottish
Water**

Trusted to serve Scotland

West Shore – Work Location

- Works planned to start **September 2024** for approximately **6 months**.
- The existing Combined Sewer Overflow (CSO) chamber will be upgraded and fitted with a mechanical screen.
- The new outfall pipe within West Shore will take any discharges from the CSO out to Mean Low Water Springs (MLWS).



(Image shows approximate locations of works)

- The new outfall pipe will be mostly buried.
- Work is ongoing regards the planning/development of this section of the works and further information will be provided in advance of this section of the works beginning.

 scottishwater.co.uk

 [/scottishwater](https://www.facebook.com/scottishwater)

 [@scottish_water](https://twitter.com/scottish_water)

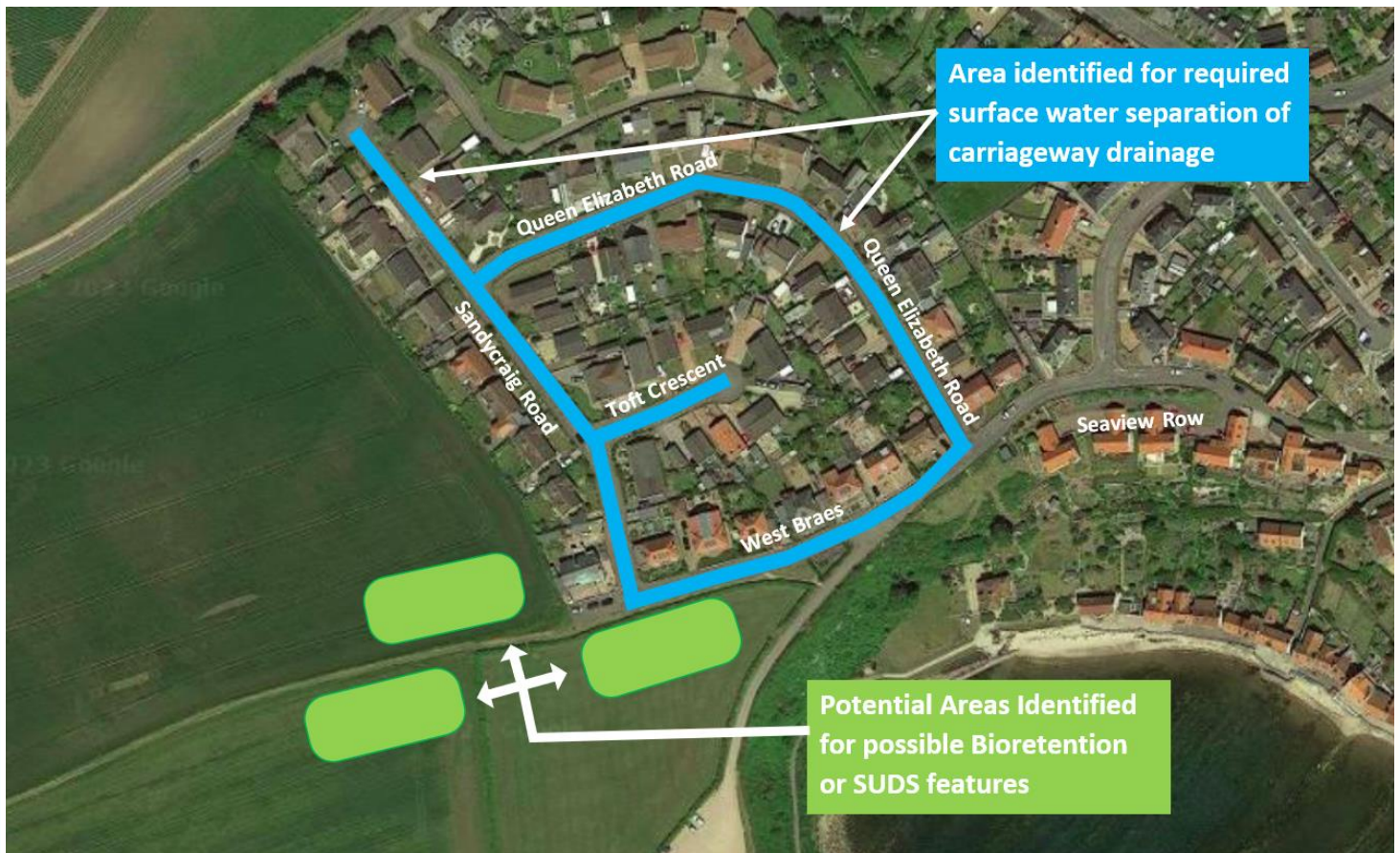


**Scottish
Water**

Trusted to serve Scotland

Seaview Row – Work Outline

- Seaview Row Flood Alleviation works are still currently being developed.
- Work will involve surface water separation in the area of Sandycraig Road, Toft Crescent, Queen Elizabeth Road and West Braes.
- These works will also involve a Bioretention/SUDS (Sustainable Urban Drainage System) type feature which is still being developed.



(Image shows approximate locations of works)

- These works are required to alleviate pressure to the existing sewer network and to alleviate local flooding issues.
- Work is ongoing to optimize the level of protection whilst reducing the impact of construction. We will communicate further details regards this as it progresses.

 scottishwater.co.uk

 [/scottishwater](https://www.facebook.com/scottishwater)

 [@scottish_water](https://twitter.com/scottish_water)



**Scottish
Water**

Trusted to serve Scotland

East Shore – Working Phases & Site Compound

EAST SHORE – Work Phases

Phase B – New
Sewer/Manholes

Phase C – CSO

Phase A - Outfall

- Work is proposed to be phased to try and keep disruption to a minimum.
- Each Phase will have different traffic management arrangements. Working areas will be securely fenced off.
- There will be parking restrictions in this Section of East Shore throughout these works.

SITE COMPOUND

Due to Restrictions of available space in East Shore, our site compound and welfare will be located in Mid-Shore.

Proposed Site Compound
for Both East Shore and
West Shore Works

Site Compound

Fisherman's
Memorial

Street furniture (seating, planters, bins) within compound area may be temporarily removed/relocated during the works.

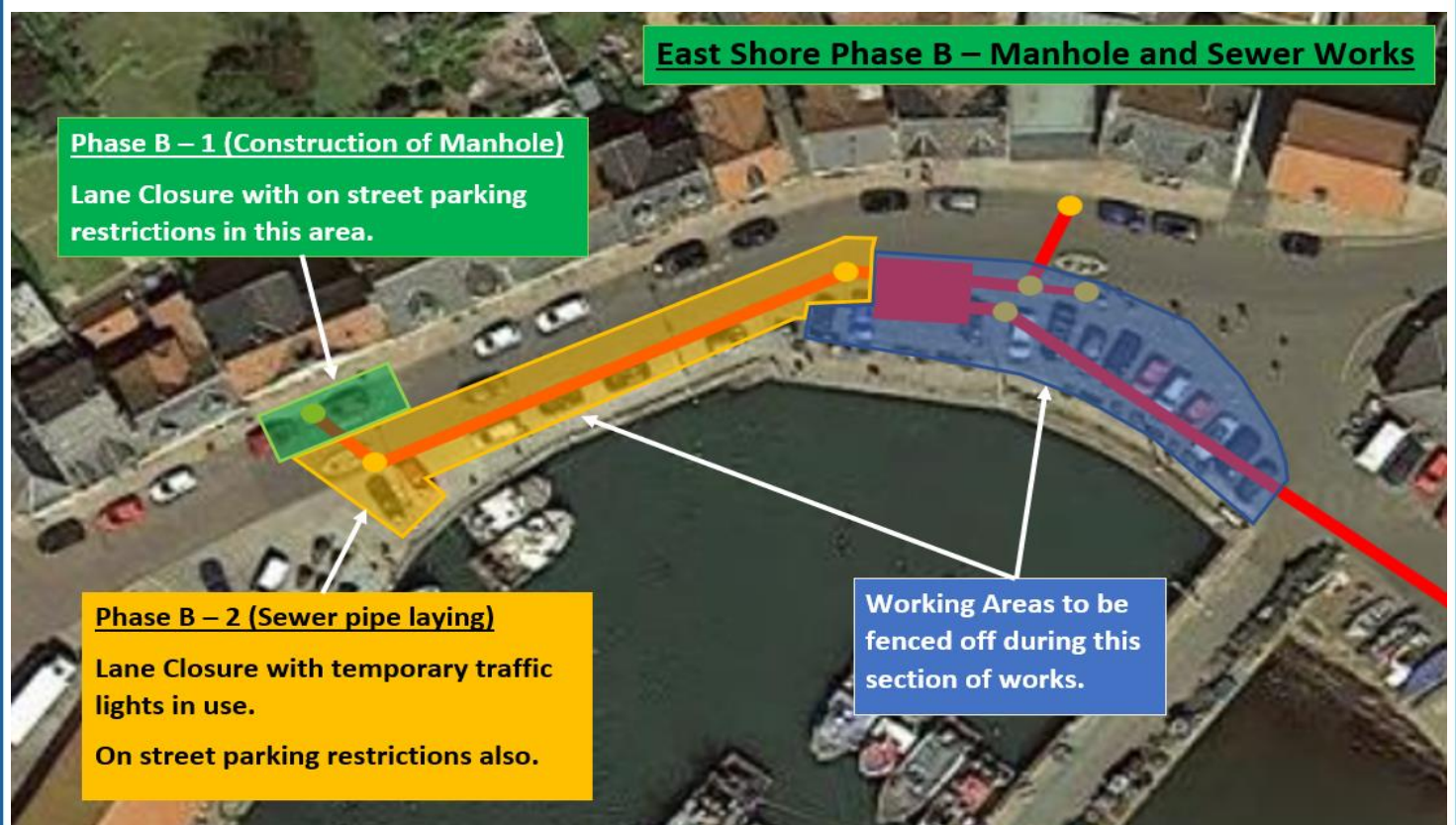
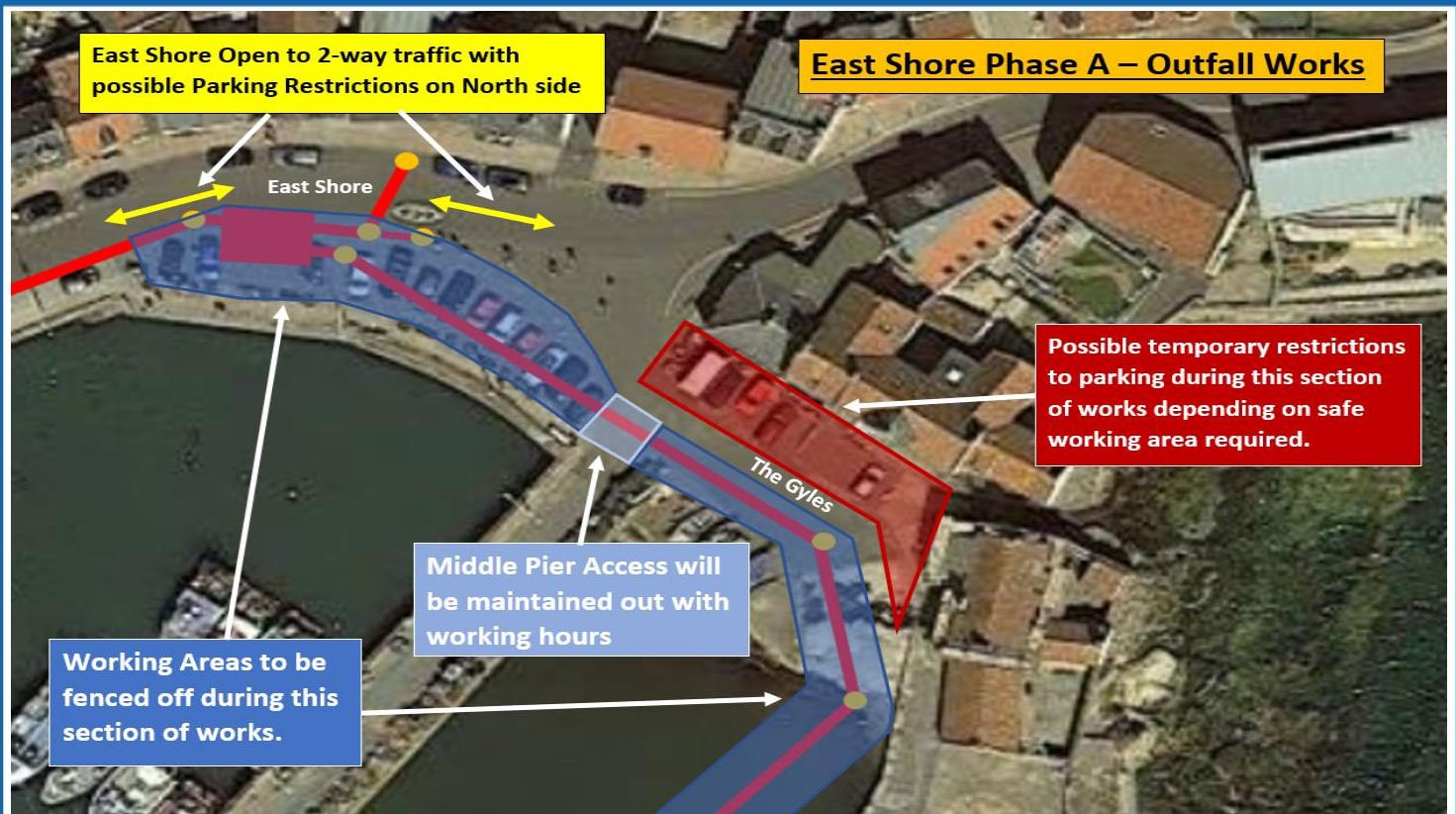
Site Cabins – 3
portacabins with one
'doublestacked' to
minimise space required
to be occupied.



**Scottish
Water**

Trusted to serve Scotland

East Shore – Phases A & B





**Scottish
Water**

Trusted to serve Scotland

East Shore – Phase C

East Shore Phase C – CSO Works

Temporary running lane



Phase C – 1 (Manhole & Sewer Works)

Lane closure with running lane within cobbled area managed with Temporary Traffic Lights.

On street parking restrictions also.

Working Areas to be fenced off during this section of works.

East Shore Phase C – CSO Works

Temporary running lane



Phase C – 2 (CSO & Manhole Works)

Lane closure with running lane managed with Temporary Traffic Lights.

On street parking restrictions also.

Working Areas to be fenced off during this section of works.



**Scottish
Water**

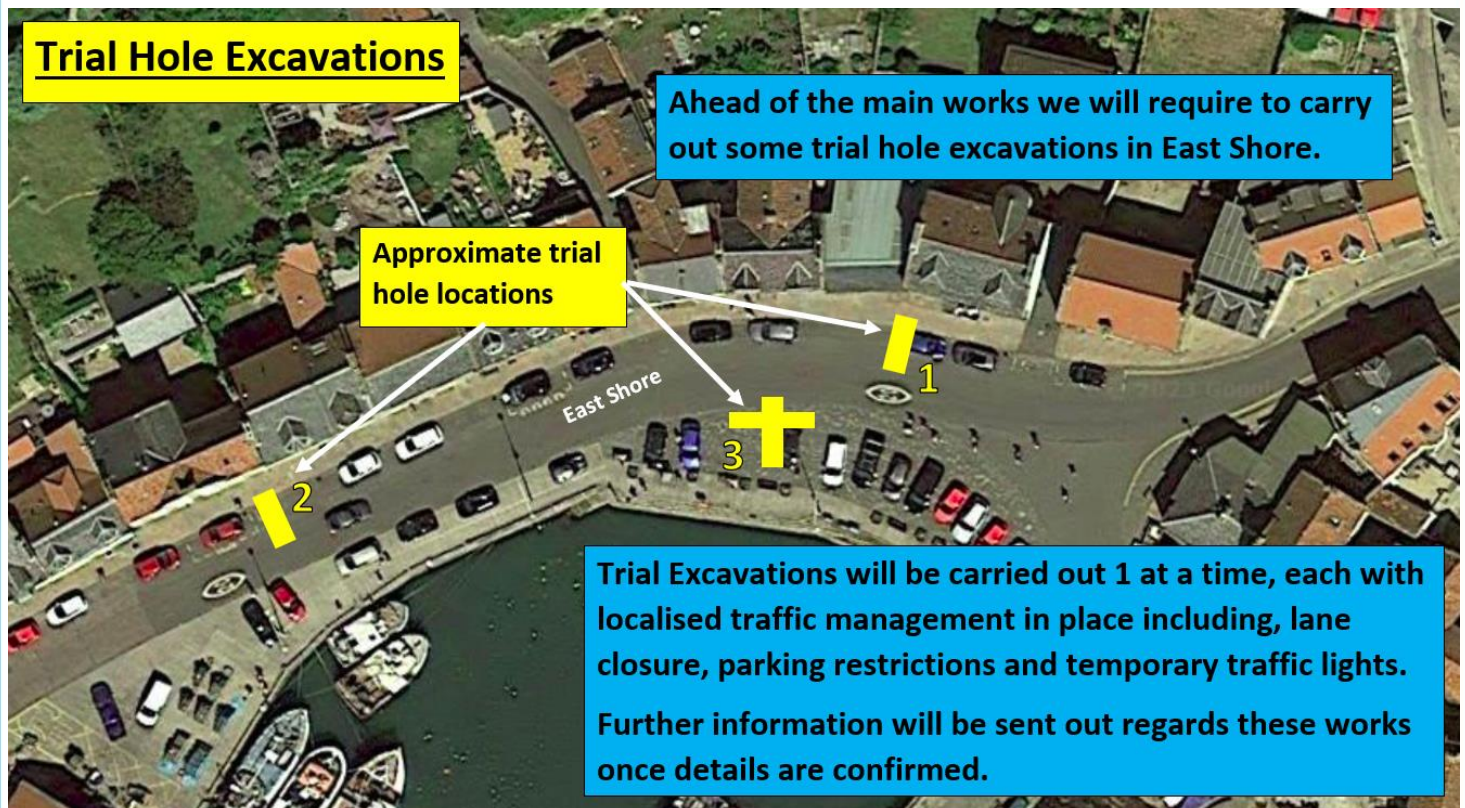
Trusted to serve Scotland

East Shore – Trial Hole Excavations

Ahead of the main construction works beginning, we will require to carry out a number of trial hole excavations in East Shore as detailed below.

These works will be carried out under local traffic management and be done 1 at a time on a rolling basis to keep disruption to a minimum.

To maintain safe working areas for these works, there will be restrictions to localised parking in place.



We will write to nearby residents with further details of these works once dates and durations have been confirmed.

 scottishwater.co.uk

 [/scottishwater](https://www.facebook.com/scottishwater)

 [@scottish_water](https://twitter.com/scottish_water)



**Scottish
Water**

Trusted to serve Scotland

Keeping in touch

Scottish Water and CWA are committed to keeping you and the local community fully informed and engaged with the work we are doing.

We hope today's event has given you an understanding of our upcoming works and an opportunity to discuss any questions or concerns.



If you want to continue to keep in touch as our project progresses, please visit **www.scottishwater.co.uk/pittenweem** or call our

Customer Helpline on **0800 0778778** quoting

Capital/pittenweem/CWA

 scottishwater.co.uk

 [/scottishwater](https://www.facebook.com/scottishwater)

 [@scottish_water](https://twitter.com/scottish_water)



**Scottish
Water**

Trusted to serve Scotland

Why are we doing this?

EAST SHORE

At times of heavy rainfall, the current CSO outfall at East Shore spills unscreened waste water directly into the Harbour. The size of the CSO and its outfall pipe is insufficient for storm flows which results in sewer flooding at East Shore.

The New CSO will have increased capacity and the new outfall will take storm water out of the Harbour into the mouth of the spillway where there is greater mixing/dispersal. The new CSO will also have a 6mm screen which will prevent most sewer debris spilling from the outfall.

Did you know:

When there are overflows from a rain storm, less than 1% of this is sewage from toilets.

WEST SHORE

Similar to East Shore, the existing CSO and outfall do not have the capacity to safely deal with storm flows. This results in flooding on West Shore and internal property flooding. This results in unscreened waste water flooding overland onto the beach and then to the sea.

The upgraded CSO will also have a 6mm screen to prevent sewer debris spilling, and the new outfall will provide additional capacity to transfer the storm water to mean low water springs (MLWS) and no longer on West Shore and the beach.

WEST PITTENWEEM SURFACE WATER SEPARATION

With the addition of the separation of surface water in West Pittenweem, the spill volumes at both CSO's are significantly reduced. Therefore, an overall improvement in spilling volume, impact and screening.



Scottish
Water

Trusted to serve Scotland

Draining the rain

Did you know –
Rainfall is projected to
increase significantly
in the next 30 years?

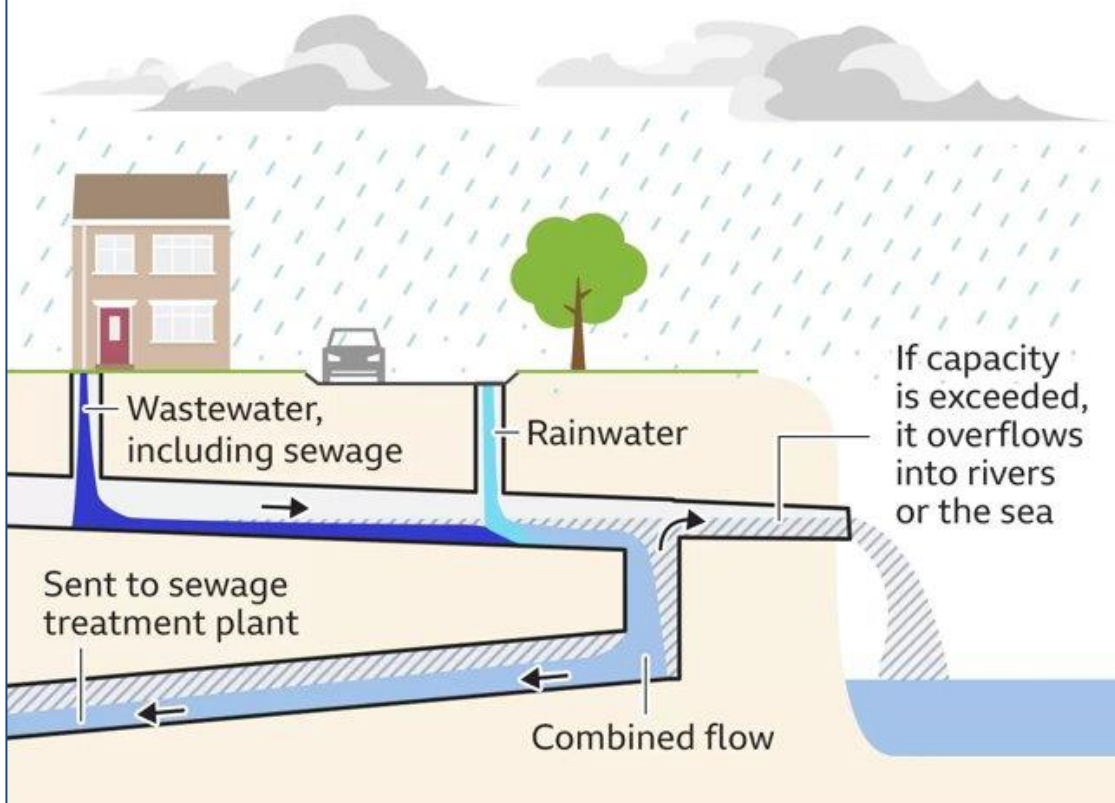
Every day we treat over 1 billion litres of waste water from homes and businesses and return it safely to the environment.

Our drainage network also helps with rain water during heavy rainfall storms. Our climate is changing and more water is getting into the drainage network than the system can cope with.

The system has a relief mechanism to safely relieve the pressure on the network, to minimise the risk of flooding to homes and businesses.

Combined Sewer Overflows (CSO)

How combined sewer systems work



CSOs are designed to release pressure on the network from rain using overflows to rivers and the sea.

When there are overflows from a rain storm, **less than 1% of this is sewage from toilets.**

CSOs are licenced and regulated by SEPA



**Scottish
Water**

Trusted to serve Scotland

Investing in Scotland's water environment

£2.7 billion

- This is how much we have invested over the past decade in improving and maintaining the country's public drainage system and infrastructure – with a further £2.3billion investment 2021-27.
- This includes £500million in the network for our [Improving Urban Water's Routemap](#)

Our programme of investment and improvement builds on progress made over many years to further enhance the quality of Scotland's water environment, which remains high - **87% of Scotland's waterbodies achieve good or better water quality.**

Last year, 98% of Scotland's designated bathing waters passed stringent environmental standards, with more than ever reaching 'excellent' status.

15 = number of designated bathing waters in Fife

10 = rated as excellent for water quality

Investing and improving

Monitoring overflows:

- We remain firmly on track to deliver on our commitment to install 1000 new monitors and have three intelligent waste water network programmes in place by the end of 2024.
- Monitors will inform us when overflows are operating and help identify any parts of the network that have issues needing fixed
- Monitors will not prevent overflows at times of heavy rainfall

Upgrading Combined Sewer Overflows (CSOs):

- As well as increasing monitoring, we are focused on improving the performance of Combined Sewer Overflows (CSOs) which have the biggest potential impact on the environment.
- There are 22 CSOs in Fife which have been identified as high priority assets where we are investigating ways of reducing the risk of sewage related debris ending up in the environment. More information can be found on our website here: [Prioritisation of Sewer Overflows in Scotland - Scottish Water](#)